

SUMMER 2024

# INSIDE THE DOMES



Mitchell Park Horticultural Conservatory

**WE WELCOMED 4,371 VISITORS TO THE DOMES FOR OUR ANNUAL ART IN THE GREEN FESTIVAL!**

Photo Credit: Milwaukee County Parks

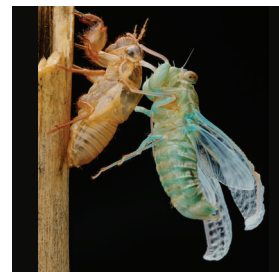


**NEW IN THE GIFT SHOP:  
PAGE 5**



**DONOR SPOTLIGHT:  
ROGER HRAWIECHI: PAGE 5**

**MKE'S  
FAMILY SPOT  
FOR SUMMER  
LEARNING**



**A BIG YEAR FOR CICADAS:  
PAGE 6**



**PARTNERSHIPS WITH LOCAL  
BUSINESSES: PAGE 7**

## NEWS FROM THE DOMES



Welcome to the Summer 2024 Mitchell Park Domes newsletter. We have a fun few months planned for you, so be sure to include us in your summer plans. Here are some fun updates from around The Domes.

### Education

- ◇ Family Fun Fest is a new program that takes place during school breaks, featuring fun activities for our school-aged friends. The next fest will be June 26, 2024. This event will sell out; register early at [MilwaukeeDomes.org/FamilyFun](https://MilwaukeeDomes.org/FamilyFun).

### Plants and Facility

- ◇ Wanting an update on Steve the Bearded Dragon? Steve is doing well recovering from a small surgery on his tail. As you may know, Steve is getting older, which is why

he has had a few health challenges. He will hopefully return to the Desert Dome for a short stay in the coming months; however, he will soon retire to a new home where he can get plenty of rest and meal worms.

### Events

- ◇ Art in the Green took place the last weekend in April and was a tremendous success generating nearly \$40,000 in admissions and donations. Thanks to everyone who participated!
- ◇ Registration for Grooving Under Glass, Sept 26, 2024, just went live. Be sure to register soon as it will likely sell out: [MilwaukeeDomes.org/GUG](https://MilwaukeeDomes.org/GUG)
- ◇ Our annual Día de los Muertos celebration will take place Oct 25, 2024. Registra-

tion will soon be available.

### Visit Gardens for Free

- ◇ The Mitchell Park Domes is a member of the American Horticultural Society Reciprocal Garden Network. This means your membership gives you access to 360+ other gardens nationwide. Reciprocity typically includes admission for two people (even if your Domes membership allows for more admissions). Visit [AHSgardening.org](https://AHSgardening.org) to plan your visit!

### Gift Shop

- ◇ Have you noticed that we now offer a wonderful selection of healthy and tasty snacks in the gift shop? Be sure to grab a treat next time you are at The Domes. ■

## The Buzz in the Tropical Dome: A Warm Welcome and Grateful Goodbye

The Tropical Dome is getting ready to welcome a new tree started in The Domes Greenhouses in 2021.

The *Cola acuminata* tree, native to tropical Africa, is grown for its seed, the kola nut. Kola nuts contain caffeine used to flavor—you guessed it—cola soft drinks! Late this summer, it will be planted in its permanent Tropical Dome home. Be sure to visit!

Our grateful goodbye... After 28 years of working for Milwaukee County Parks (14 years at The Domes!) beloved horticulturist, Mary Braunreiter, retired this spring.

Mary lovingly cared for a myriad of plant and animal species in the Tropical Dome for 9 years and in the Show Dome for 5 years. She received numerous orchid awards over the years.



Mary Braunreiter with the new *Cola acuminata* tree.

In addition to her work at the conservatory, Mary forged many meaningful partnerships with surrounding gardens and museums.

We appreciate Mary's dedication and commitment to the amazing collection at the Mitchell Park Domes. Congratulations to Mary on her retirement! ■

## Exciting New Future for the Mitchell Park Domes

Our members often ask for updates on where we stand in terms of the future of The Domes. We are working on new ways to keep you informed, including periodic webinars and blog posts.

### What's Happening Today?

A "Domes Reimagined Project" team made up of engineers, architects, real estate developers, and financial experts has formed. This group is tasked with creating an initial design

plan that checks the necessary boxes. For the strategy to be successful it must:

- Address the building's physical limitations (no more leaks, improved functionality, ADA compliance, etc.);
- Revitalize and activate Mitchell Park (both investments in infrastructure and ongoing programming);
- Support a sustainable business model (more revenue than expenses!).

In the future, The Domes will continue to be the amazing conservatory you know and love—but we will add new functionality.

The initial plan is due to be released this summer. We will have architectural renderings as well as accurate cost estimates.

To stay up-to-date on the Domes Reimagined Project, subscribe to our blog. Find more information on our webpage: [www.MilwaukeeDomes.org/vision](https://www.MilwaukeeDomes.org/vision) ■

## Welcome Kathy Kortez, Advancement Director



ing an animal shelter, a hospice, and an organization that helps victims of domestic and sexual violence. She regularly visited The Domes with her own children so they could experience the magic.

When the Advancement Director position for Friends of the Domes opened, she saw an opportunity to meld her experience in fundraising with her interest in returning to Milwaukee and her love of The Domes.

As Advancement Director, Kathy works with donors to ensure a future for Mitchell Park and its conservatory.

She has heard the message that Milwaukee cares a lot about The Domes, and she enjoys sharing how much Friends of the Domes is accomplishing and helping

people understand its mission. As the nonprofit arm of The Domes, Friends of the Domes plays a vital part in its operations, educational programming, marketing, and funding.

She loves how The Domes attracts visitors of all ages—from parents with small children to seniors enjoying the smells and sights—all appreciating a respite from Milwaukee's sometimes challenging weather. During Art in the Green this April, Kathy enjoyed seeing excited visitors of all ages enjoying and purchasing art and their joy when they discovered that admission to the art show included admission to The Domes.

We welcome Kathy and her dedication to ensuring a future for our conservatory. ■

**K**athy grew up in the suburbs of Milwaukee and loved visiting The Domes with her family as a child. After graduating from UW-Madison, she moved to Chicago where she led development and advancement efforts for a variety of nonprofit organizations includ-

## FROM THE EDUCATION CENTER

### Field Trips—Not Just for Schools!

**T**he Education Program at The Domes has a variety of options for educator-led field trips for all ages and groups. This includes scout groups, camp groups, community groups, and home school programs. We offer a variety of topics including *Pollinators Unite!*, *Designed for the Desert*, *Plants and You*, and *Discover The Domes*. Learn more at [MilwaukeeDomes.org/fieldtrips](http://MilwaukeeDomes.org/fieldtrips) ■



Photo Credit: Source TEN

## GIFTS UNDER GLASS

### New From Our In-House Gift Shop Artists



*Gifts Under Glass sources many items locally from artists, artisans, and producers like our house artists Lucas Alamo and Casey Harrison. Members always enjoy 10% off of gift shop purchases and the joy of knowing they are helping to support our mission!*

## DONOR SPOTLIGHT: ROGER KRAWIECKI

**R**oger Krawiecki has been a dedicated and valued member and volunteer at The Domes since 1987. That's right, he has been a member for 37 amazing years!

From visitor to member to committed volunteer and leader, he has supported Friends of the Domes in many ways. He volunteered for the very first art festival at The Domes and has volunteered for every art festival since. He has volunteered for many other events, in the Education Center, and led as President and Treasurer of the Friends of the Domes Board of Directors!

Roger's commitment to the con-

servatory extends even further as he is also a monthly donor. This level of support ensures a vital monthly revenue stream. Roger designates his monthly giving to the Endowment Fund, an investment set aside to earn revenue to fund the ongoing operations of Friends of the Domes. Donors can allocate contributions to the education fund, school scholarships, or the area of greatest need.

Roger is motivated by his love of the plant collection and the warmth of the Tropical Dome. He shared, "I have been to many gardens during my travels. The variety of the collection at The Domes is outstanding. The height of The Domes allows you



to be completely immersed in the three unique environments."

Thank you, Roger, for your continued support of The Domes, both as a volunteer and dedicated donor! ■

# FOR THE LOUE OF NATURE

## Welcoming Two Broods of Cicadas This Summer

By Ann Szekely, Friends of the Domes Member and Garden Volunteer

Entomologists have described and named 3,378 species of cicadas worldwide. Annual or “dog-day” (*Neotibicen* spp.) and periodical (*Magicicada* spp.) species can be found in Southeast Wisconsin. Annual cicadas can be seen each year and have a life cycle of two to five years. The 3 *Magicicada* or periodic species, have much longer life cycles spending 13 or 17 years underground, feeding on roots before emerging and transforming into adults.

Two groups of cicadas named Brood XIII and Brood XIX will arrive in quantity in the Midwest this May or June when the soil temperatures reach approximately 64 degrees Fahrenheit. The two broods only surface at the same time every 221 years! The last year two broods surfaced in our area was 1803 (the year the Louisiana Purchase was completed). Central Illinois will see both broods, but not at the same time. Southern Wisconsin will see Brood XIII.

Periodical Cicadas emerge from the ground in mass quantities as a survival tactic. Because millions surface simultaneously, no predators can eat all of them. They live for only three to four weeks when they share their loud songs. The males sing to entice the females by vibrat-

ing their drum-like “tymbals” on their stomachs. Their chorus that can reach a volume of 90 decibels, comparable to a lawn mower. Their life cycle above ground is short but action-packed; they molt, mate, and die. The newly laid



eggs hatch then go back underground to feed.

Some people find cicadas creepy, but they are beneficial to us and our environment. Cicadas do not sting, bite, carry diseases, or have jaws to feed in adult form. The tunnels they dig in the soil help aerate lawns and gardens. They are a food source for birds, fish, and raccoons.

Their decaying bodies also provide nitrogen for the soil. While they may do some damage to



trees, most established trees will recover just fine and might even benefit from the natural pruning. More delicate trees can be protected with netting.

We hope you will help us welcome these fascinating, loud but peaceful friends. ■

References: Klein, B. (2024, February 7). Cicadas 2024. Currents: University of LaCrosse Blog. <https://www.uwlax.edu/currents/cicadas-2024>; Chicago Botanic Garden. 2024. Cicadas are coming! [https://www.chicagobotanic.org/plantinfo/periodical\\_cicada\\_17year](https://www.chicagobotanic.org/plantinfo/periodical_cicada_17year)

## Cultivating Symbiotic Partnerships with Local Businesses

Friends of the Domes is committed to building partnerships with our local community. We have recently joined with two local businesses, Component Brewing and Milwaukee Candle Company, to create unique products that celebrate The Domes.

Milwaukee Candle Company designed a candle honoring the Tropical Dome. It is part of their Hometown Collection, which Manager Wes Marse explains is “about Milwaukee and highlighting the amazing places and events that this city has to offer.” The fruit-forward scent evokes the “earthy and woody” experience of walking through our most lush and luxurious dome. These high quality soy-based candles are available in our gift shop.

We also joined forces with Com-

ponent Brewing in Bay View. Brewer Doug Krysiak shared that “supporting the Friends of the Domes and bringing more attention to The Domes is important” to him. He brewed beers that incorporated flavors from each of the three domes: the Desert Dome contains agave and lime, the Floral Dome uses Phantasm hops, and the Tropical Dome is flavored with soursop, guava, and pineapple. Component Brewing has these special beers on tap at their Bay View taproom in the Lincoln Warehouse for a limited time.

A portion of the sales from these special products benefits our work to secure a future for the Mitchell Park Domes.

Interested in collaborating on a project? Please contact Kathy Kortés at [Kathy.FOD@MilwaukeeDomes.org](mailto:Kathy.FOD@MilwaukeeDomes.org). ■



Article Sources: CBS News Interview; OnMilwaukee.Com

## UPCOMING EVENTS

Most programs require pre-registration. Visit [MilwaukeeDomes.org](http://MilwaukeeDomes.org) for more information.

**Story Time in the Lobby:** Every Wednesday, 10AM (no pre-reg)

**Summer Show, *United Plants Across America*:** June 8-Sept 8

**Growing & Thriving Workshop (Ages 60+):** June 15, 1-3PM; July 25, 10AM-12PM

**SPARK! at The Domes (Memory Care):** June 25, July 23, Aug 27, Sept 24, Oct 22, Nov 26, Dec 17, 10AM-Noon

**Flower Fest: A Family Fun Fest:** June 26, 9AM-12PM

**Yoga and Sound Bath (Bilingual\*):** July 10, 5:30-6:45PM

**Make Your Own Bird and Bee Bath:** July 20, 2:30-4:00PM

**Yoga and Sound Bath (Bilingual\*):** Aug 14, 5:30-6:45PM

**Visit our booth at the Green and Healthy Schools Conference (UWM Student Union):** Aug 21

**Pressed Plant Crafting:** Aug 28, 5:15-6:30PM

**Orchid Show in the Show Dome:** Sept 14-15, 9AM-4PM

**Grooving Under Glass:** Sept 26, 6-9PM

**Bilingual\* Growing & Thriving Workshop (Ages 60+):** Oct 17, 1-3PM

**Día de los Muertos (Day of the Dead):** Oct 25, 6-9PM

**Member Preview Night: Holiday Show:** Nov 22, 6-8PM

\*Bilingual programs are offered in Spanish and English.



524 S. Layton Blvd.  
Milwaukee, WI 53215

**Phone:** (414) 257-5608

**E-mail:** FOD@MilwaukeeDomes.org

**Website:** www.MilwaukeeDomes.org

ADDRESS  
SERVICE  
REQUESTED

NON-PROFIT ORG.  
U.S. POSTAGE  
PAID  
MILWAUKEE, WI  
PERMIT NO. 2305



### SUMMER FLORAL SHOW: UNITED PLANTS ACROSS AMERICA

**June 8-September 8**

The Show Dome will offer a horticultural road trip featuring iconic landmarks from each region of the U.S. Save time and gas money but still come home with lasting memories!



### FLOWER FEST: SUMMER FAMILY FUN FEST

**June 26, 9AM-12PM**

Keep the kids learning this summer at our next Family Fun Fest that celebrates flowers and pollinators. To register, go to [MilwaukeeDomes.org/FamilyFun](http://MilwaukeeDomes.org/FamilyFun)



### GROOVING UNDER GLASS

**September 26, 6-9PM**

Join us for an evening of music and fun. Visit [MilwaukeeDomes.org/GUG](http://MilwaukeeDomes.org/GUG) for more information and to purchase tickets.